



FEATURES

- 15.6" IPS LCD Screen (1920 x 1080 Resolution)
- 11th Gen Intel Tiger Lake i5 or i7 Processor
- Windows 11 Pro OS
- IP54 Water & Dust Protection
- 3ft Drop / Shock Protection (MIL-STD-810G)
- Hot Swappable Battery

The medical grade tablet PC MD-150 combines exceptional performance with high reliability, featuring a bright 15.6" high resolution touch screen, powerful Intel core i5/i7 processors, and a rugged design, all backed by medical IEC 60601-1 certification. Its IP54 waterproof and protective rubber edges make it suit tough medical environment, such as surgery room, ambulance, medical carts, and mobile medical imaging system.

SPECIFICATIONS

RUGGEDNESS

IP Rating	IP54
Drop Rating	3ft to Marble, Only 4 Corners, Front Side
Shock Rating	MIL-STD-810G-2014, Method 516.6, Procedure I, 40g
Vibration Rating	MIL-STD-810G-2014, Method 514.6, Program I
ESD Protection	8KV Contact, 15KV Air

SYSTEM

Processor	Intel® Core™ i5-1135G7 Processor, 4 Cores, 8 Threads, 8MB Intel® Smart Cache, 2.4GHz Base Frequency, 4.2GHz Max Turbo Frequency Optional: Intel® Core™ i7-1165G7 Processor
GPU	Intel® Iris® Xe Graphics, Max Frequency 1.3GHz
Memory	8GB LPDDR4X Optional: 16GB LPDDR4X
Storage	PCIe Gen 4 SSD, 256GB (Up to 1TB)
OS	Windows 11 Pro 64bit Optional: Linux
Security	TPM 2.0

DISPLAY

Screen Size	15.6" IPS LCD
Resolution	1920 x 1080 (16 : 9)
Brightness	300 nits
View Angle	+/- 85°
Contrast Ratio	800 : 1
Touch Screen	Capacitive 10-Point Multi-Touch Auto-sensing, Configurable to Wet and Glove Touch Chemically Hardened Glass Supports Windows-certified Digital Pen Optional: AG/AF Coating

COMMUNICATIONS

Wi-Fi	Intel AX 210, Support WiFi 6E, 802.11 a/b/g/n/ac/ax 2.4G & 5G
Bluetooth	Bluetooth 5.2
4G LTE (Optional)	4G LTE Module with M.2 Interface
GPS	UBlox NEO-M10, GPS L1C/A, SBAS L1C/A, QZSS L1C/A, GLONASS L1OF, BeiDou B1, Galileo E1B/C

POWER

AC Adapter	100-240V AC Input, 19V/3.42A DC Output, Standard US Plug, Medical AC Adapter, Optional: Multi-National AC Plugs
Battery	Hot-swappable 3S1P Li-ion 11.4V DC @ 5820mAh - 66.348Wh Internal Battery: 6.66Wh 600mAh 11.1V

I/O INTERFACE

Sensors	Ambient Light Sensor, G-Sensor
Audio	1 x Built-in Microphone 2 x 4ohm, 1.5W speakers
Camera	Front Camera: 2MP, Rear Camera: 5MP with LED Flash
Ports	1 x USB 3.0 Type C (Only Support USB 3.1 and Display) 1 x USB 3.0 Type A 1 x USB 2.0 Type A 1 x 1000M RJ45 Port 1 x Nano SIM Slot (Internal) 1 x Audio Jack 1 x DC Jack 1 x Docking Connector (1 x 37pin, 19V DC Input, 1 x USB 3.0, HDMI Output)
Buttons	Power On/Off Button, Volume +/- Button 2 x Programmable Buttons

MECHANICAL

Chassis	Front: Plastic, Rear: Aluminum, Footpad: LSR
LED	1 x Charge Indicator, 1 x Power Indicator, 1 x SSD Indicator
Dimensions	402.8 x 262.6 x 23.13mm
Weight	2.2Kg
Thermal	Fanless Design
VESA Mount	75 x 75mm, M4 Screw

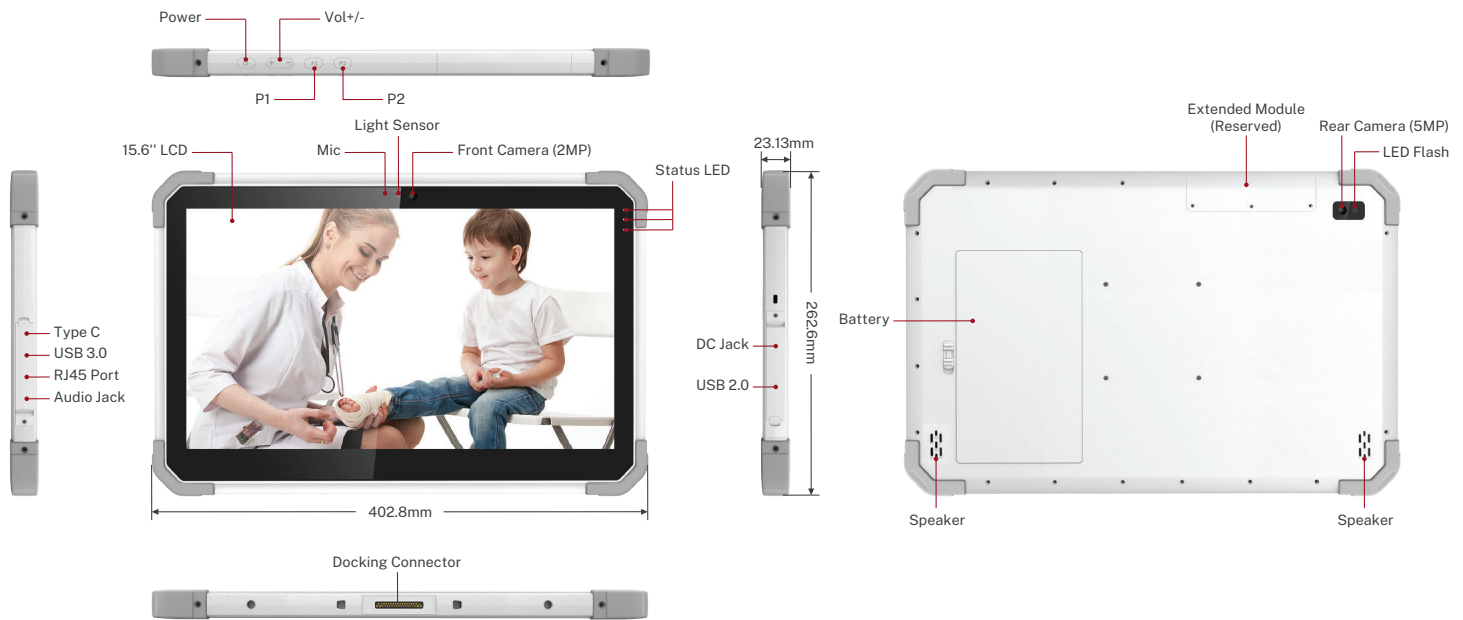
ENVIRONMENTAL

Temperature:	
- Operation	-10°C to 40°C
- Storage	-20°C to 60°C
Humidity	1% to 95% Non-condensing, -20°C to 60°C
Thermal Shock	-20°C to 60°C Within 5 Minutes, Non-operating

REGULATORY

Certification	FCC, CE, RoHS, IEC 60601-1, IEC 60601-1-2
Battery	IATA, UN38.3, IEC 62133

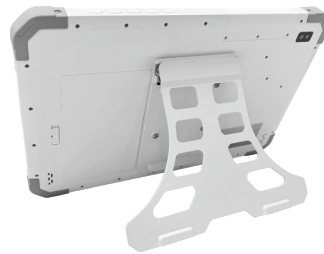
DIMENSIONS AND SYSTEM LAYOUT



OPTIONAL ACCESSORIES



Docking Station



Kickstand



VESA Mount to Medical Cart

MARKET & APPLICATIONS:

Medical: Surgery Room, Ambulance, Medical Carts, and Mobile Medical Imaging System